

Tiki Manager Web Administration implements many of the features of [Tiki Manager](#), the console (command line) part and is designed to be easy and simple to use. While Tiki Manager is mature and well tested, the web interface is of beta quality (as of 2021-04). Some features are missing. And there can be timeouts, so you likely will have to tweak your server settings. Basically, if the web interface works for your requirements, great. If there are issues, just revert to the command line interface. If you are interested in improving this feature, please [join the community and contribute](#).

Screenshots

1.2. Key features

1.2.1. Instances

1.2.1.1. Create a new instance

To create a new instance, go to **Instances → Create a new instance**, (e.g <http://example.org/create>), fill in the fields on the server as shown in this example:

Tiki Manager Web Admin

Instances ▾Manage ▾Backups ▾Help ▾

admin ▾

Creating a new instance

Connection Type	Local ▾
Instance name	My First Instance
Contact email	contact@example.org
Web root	/var/www/virtual/example.org/html/
Web URL	http://example.org
Work directory	/tmp/trim_temp
Backup owner	apache
Backup group	apache
Backup file permissions	770
Instance version	git : 21.x ▾

Scroll down to Database Settings; it is necessary to have a user with administrative privileges in order to create users and databases:

Tiki Manager Web Admin

Instances ▾Manage ▾Backups ▾Help ▾

admin ▾

Instance version

git : 21.x ▾

Database settings

It is required a user with administrative privileges in order create users and databases.

Database hostname	localhost
Database User <small>with administrative privileges</small>	root
Database Password	*****
Database Prefix	instance
Database user	instance_user
Database name	instance_db

⏪ Cancel

Save

Tiki Manager Web Administration

1.2.1.2. Import a Tiki instance

To import a Tiki instance, go to **Instances → Import a tiki instance**, once at (e.g <http://example.org/import>), specify the path of the instance in the "Tiki Web root" field as shown in the example below:

Tiki Manager Web Admin

Instances ▾Manage ▾Backups ▾Help ▾

admin ▾

Tiki Manager Web Administration

Importing a Tiki instance

Tiki Web root

/var/www/virtual/localhost/html/

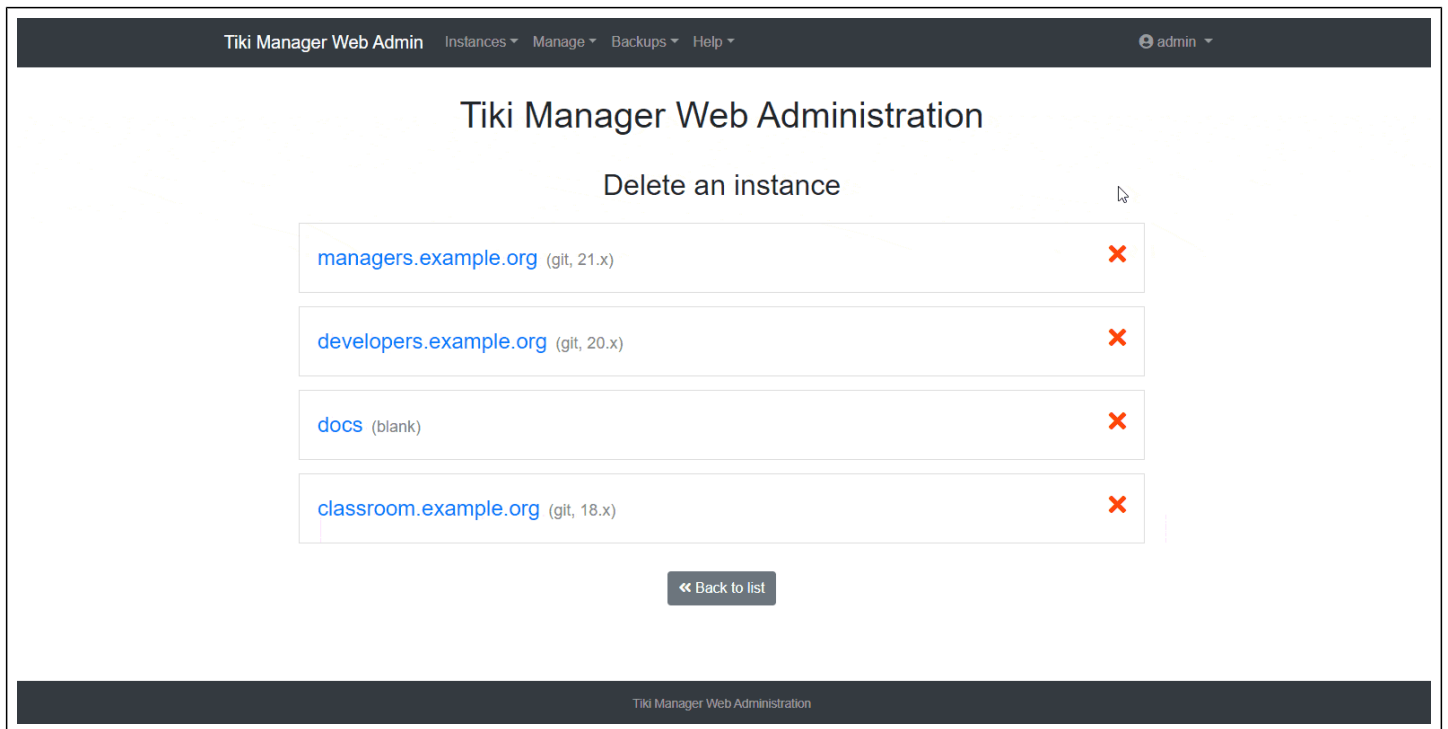
⏪ Cancel

Import

Tiki Manager Web Administration

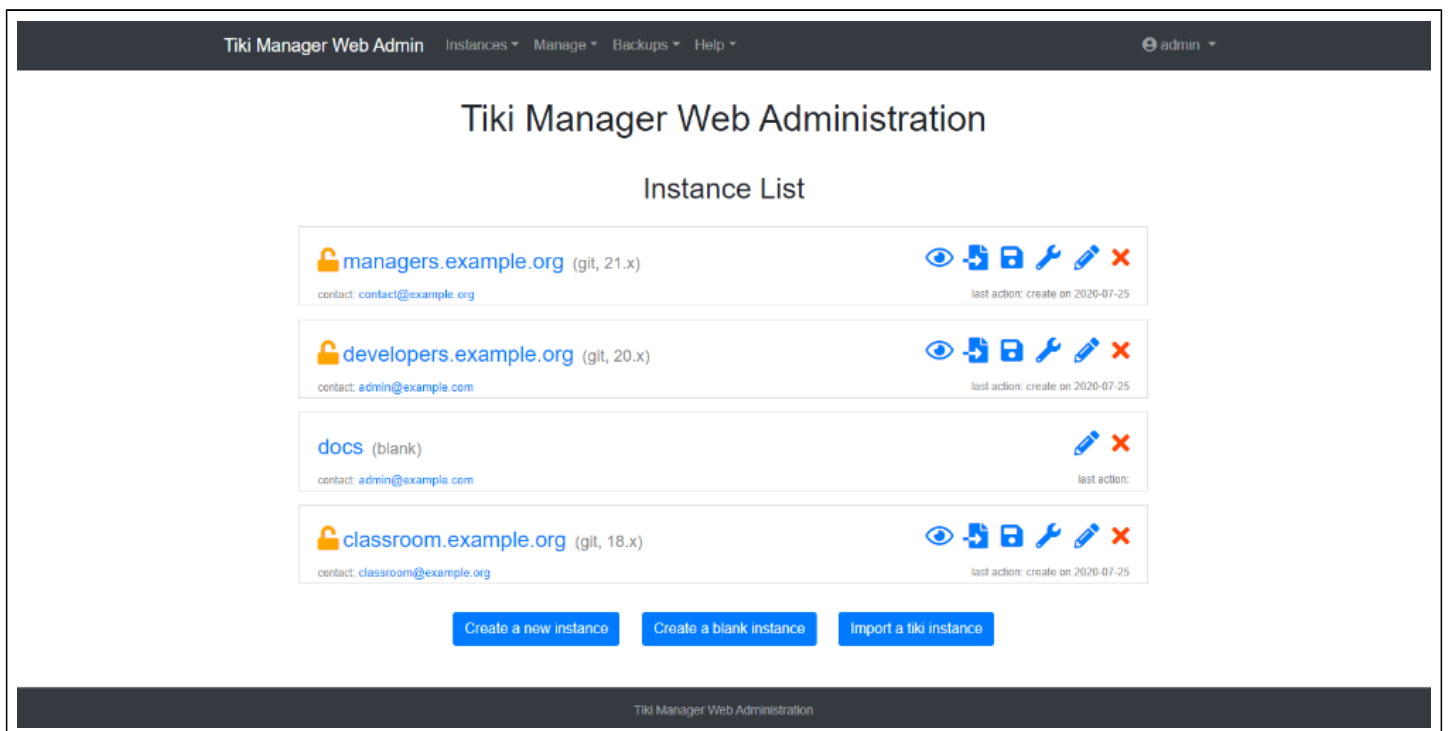
1.2.1.3. Delete an instance

Deleting an instance is done by going to **Instances → Delete an instance**, (e.g <http://example.org/delete>), if you click on the ✕ icon, confirm your action with a click on the “Delete” or the “Cancel” button to cancel it. Note that you do NOT delete your Tiki. The action just deletes the instance connection to Tiki Manager Web Administration.



1.2.1.4. List Instances

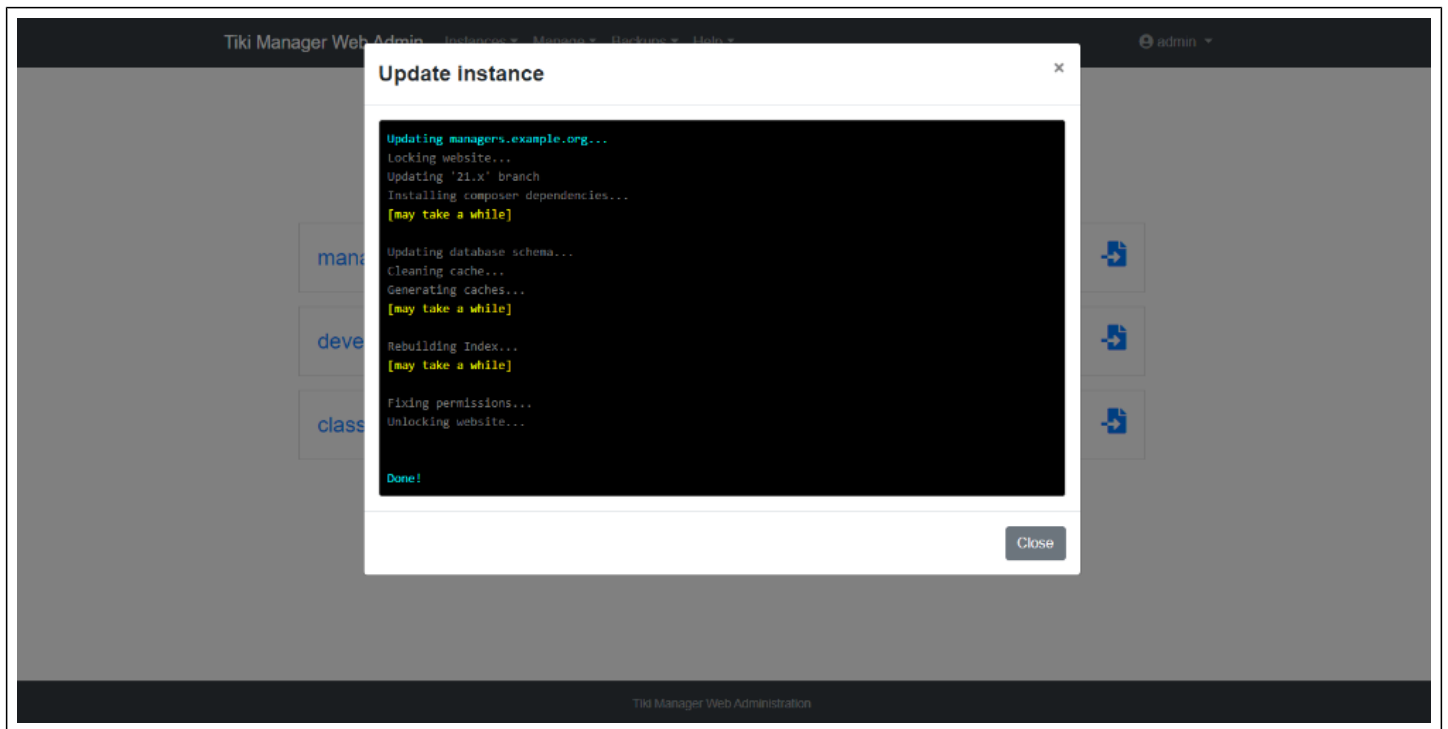
All your instances are displayed at (e.g <http://example.org/list>), **Instances** → **List instances**. On this page or on the home page, you can perform actions such as “Create a blank instance”, “Edit an instance”, “Fix an instance”, etc.



1.2.2. Manage

1.2.2.1. Update an instance

Update an instance, by going to **Manage** → **Update an instance**, (e.g <http://example.org/update>), and then click on an instance, a modal will open and you will see a result like this:

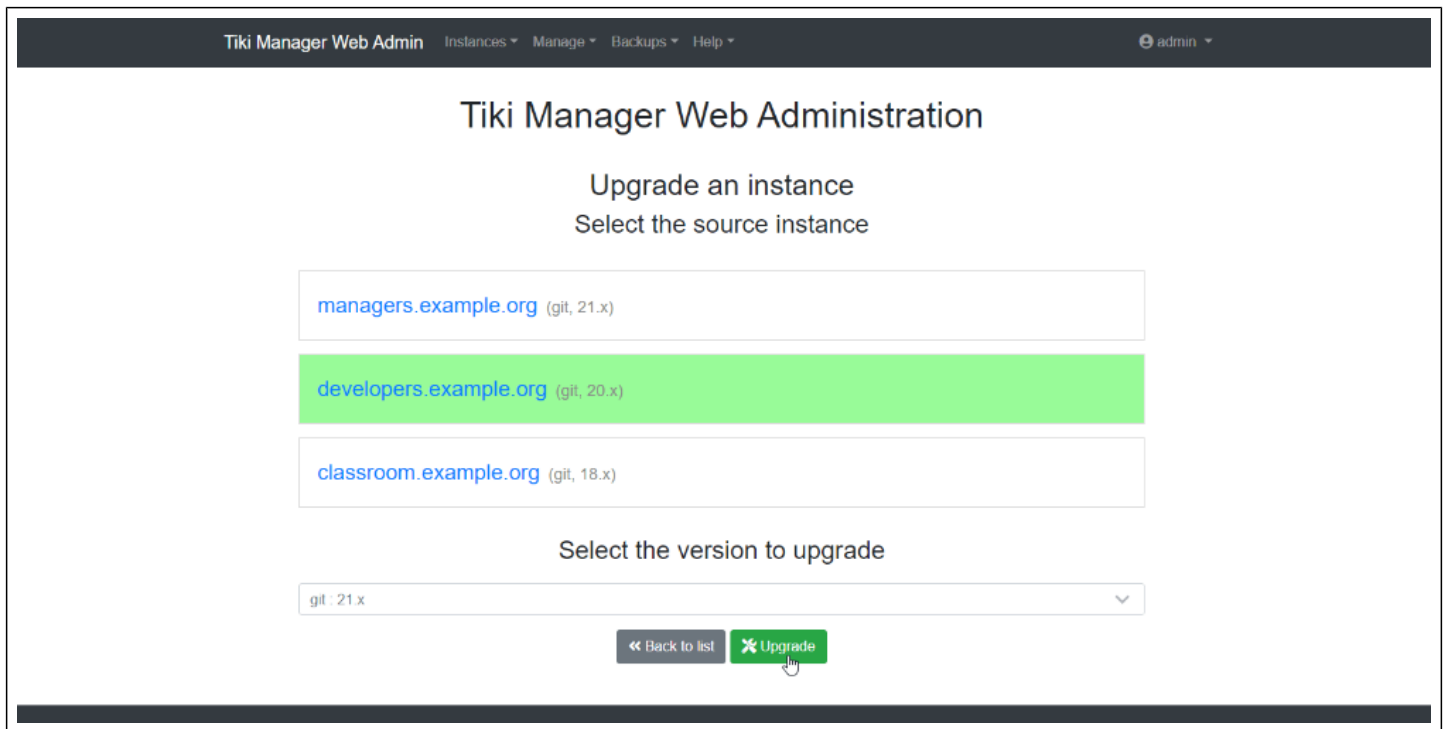


This operation:


- Does a *dry-run* first, and aborts on any conflicts
- Updates to latest code in that branch (or trunk) using `git pull` or `svn up` and thus merging any changes
- And all operations should be done after updating the code
 - Updates the file hashes accordingly. The hash verification/update may prompt with some files containing conflicts if modifications were made on the instance.
 - Performs the database update.
 - Runs setup and Composer,
 - Clears cache
 - Rebuilds search index

1.2.2.2. Upgrade an instance

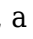
You can also upgrade your instance. For example to move from version 20.x to version 21.x. To do this, proceed as follows: **Manage** → **Upgrade an instance**, on the page (e.g <http://example.org/upgrade>); select the source instance, then select the version to be upgraded, then click on the upgrade button. A modal will open to give you the upgrade report.



1.2.2.3. Fix an instance

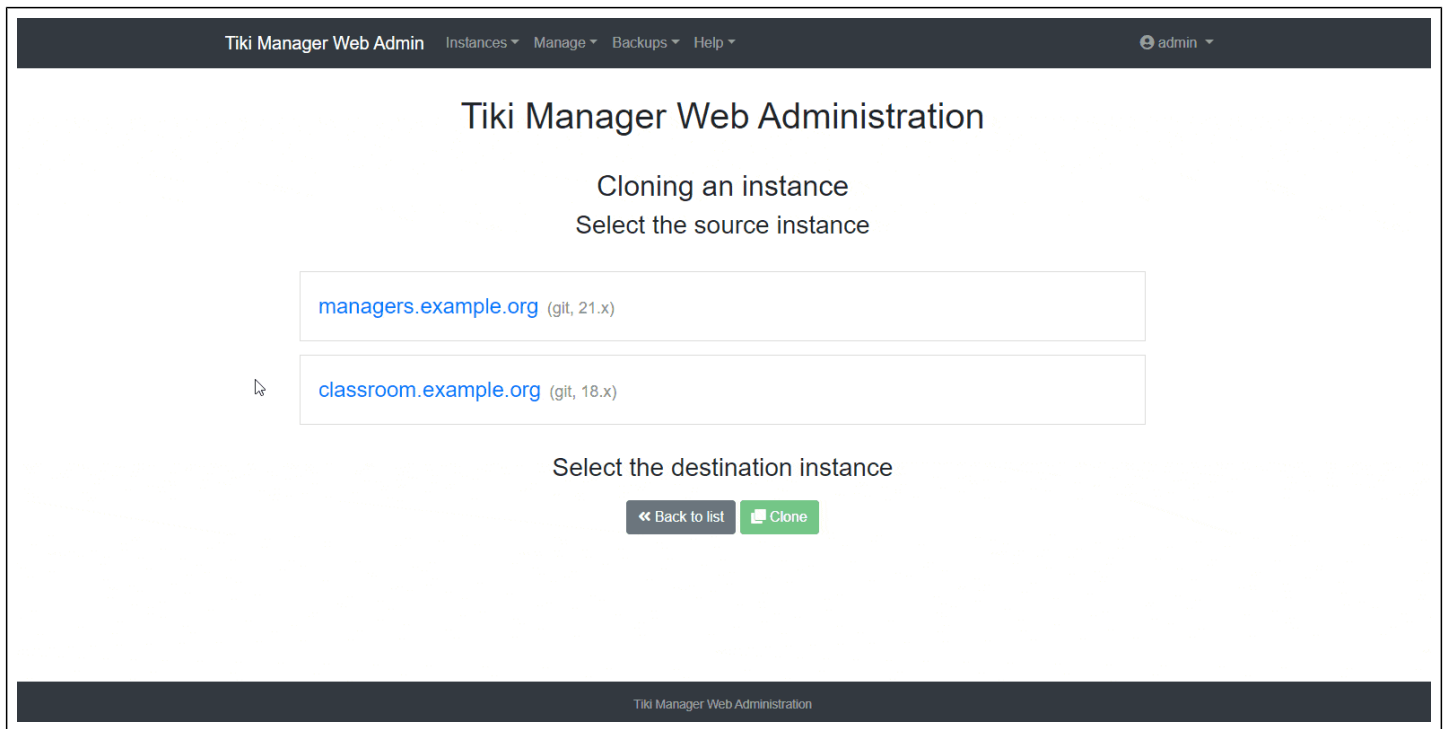
To fix the permissions of an instance with Tiki Manager Web Administration, proceed to **Manage → Fix an instance**, (e.g <http://example.org/fix>). On the list of your instances, set the instance of your choice by clicking on the  button. This action is equivalent to running the command `sh setup.sh` using automated parameters.

1.2.2.4. Watch an instance

Tiki Manager Web Administration allow you to check for anomalies in an instance, proceed to **Manage → Watch an instance**, (e.g <http://example.org/watch>). On the list of instances, click on the  button, a modal will appear to give you a report of the process.

1.2.2.5. Clone an instance

If you want to create an identical copy of an instance, go to **Manage → Clone an instance**, (e.g <http://example.org/clone>). On the list of your instances, select the source instance, then the destination instance and click on the "clone" button. A modal will open to give you the clone report.



Be very careful, when using another existing Tiki Instance, as the data here will be wiped and replaced by the data from the source instance.

1.2.2.6. Clone and Upgrade an instance

You can also clone, create an exact copy of an instance and upgrade it simultaneously with Tiki Manager Web Administration. Like **Clone an instance** with an extra upgrade operation. To do this, scroll down the "Manage" menu, click on "Clone and upgrade an instance", once on the page:

- Select the source instance, the one you want to clone and upgrade;
- Select the destination instance, the instance in which you want to clone and upgrade;
- Select the version to upgrade (e.g. 21.x)
- Click on the "Clone and Upgrade" button.

1.2.3. Backups

1.2.3.1. Backup an instance

To backup an instance with Tiki Manager Web Administration, go to **Backups → Make a Backup**, (e.g <http://example.org/backup>), and click on the relevant instance; a modal will open to show you the process and give a report.

The backup includes all files (using *rsync* for efficient bandwidth management) on remote host (including user files and files stored out of the web root) and a dump of the database. Each backup is archived in the `backup/archive` folder as a `.tar.bz2` file, where Tiki Manager is installed.

The backup file contains:

- `manifest.txt`: Indicates where folders were located on the remote host
- `database_dump.sql`: Self-explanatory
- `[a-f0-9]{32}`: Folders named using a hash. Content of the folders on remote host. The `manifest.txt` file lists these hashes.

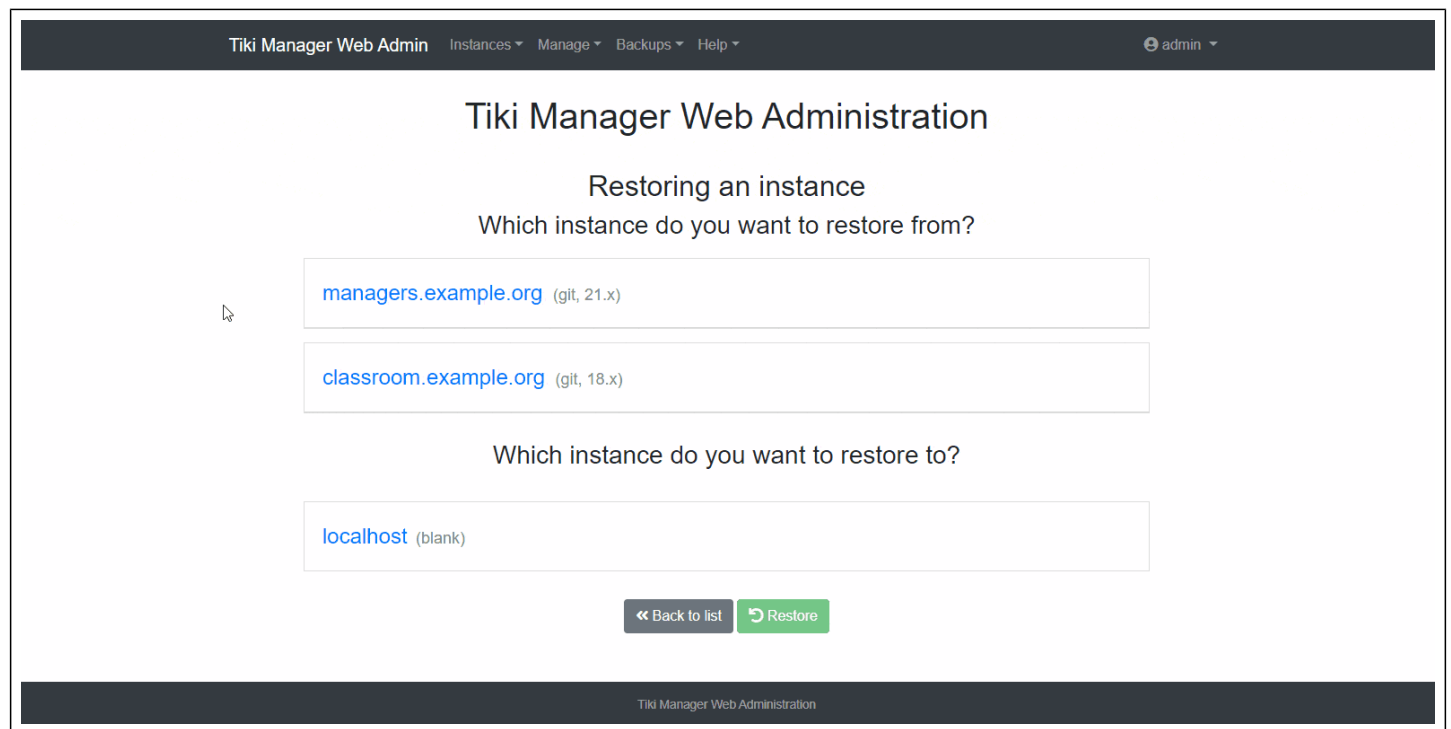
1.2.3.2. Restore an instance

Go to **Backups → Restore an instance**, (e.g <http://example.org/backup>), once the instances are listed:

- Select instance do you want to restore from;

- Select the backup do you want to restore;
- Select the instance do you want to restore to;
- Click on the "Restore" button.

A modal will open and give you the report of the restore.



Tiki Manager Web Admin Instances Manage Backups Help admin

Tiki Manager Web Administration

Restoring an instance

Which instance do you want to restore from?

managers.example.org (git, 21.x)

classroom.example.org (git, 18.x)

Which instance do you want to restore to?

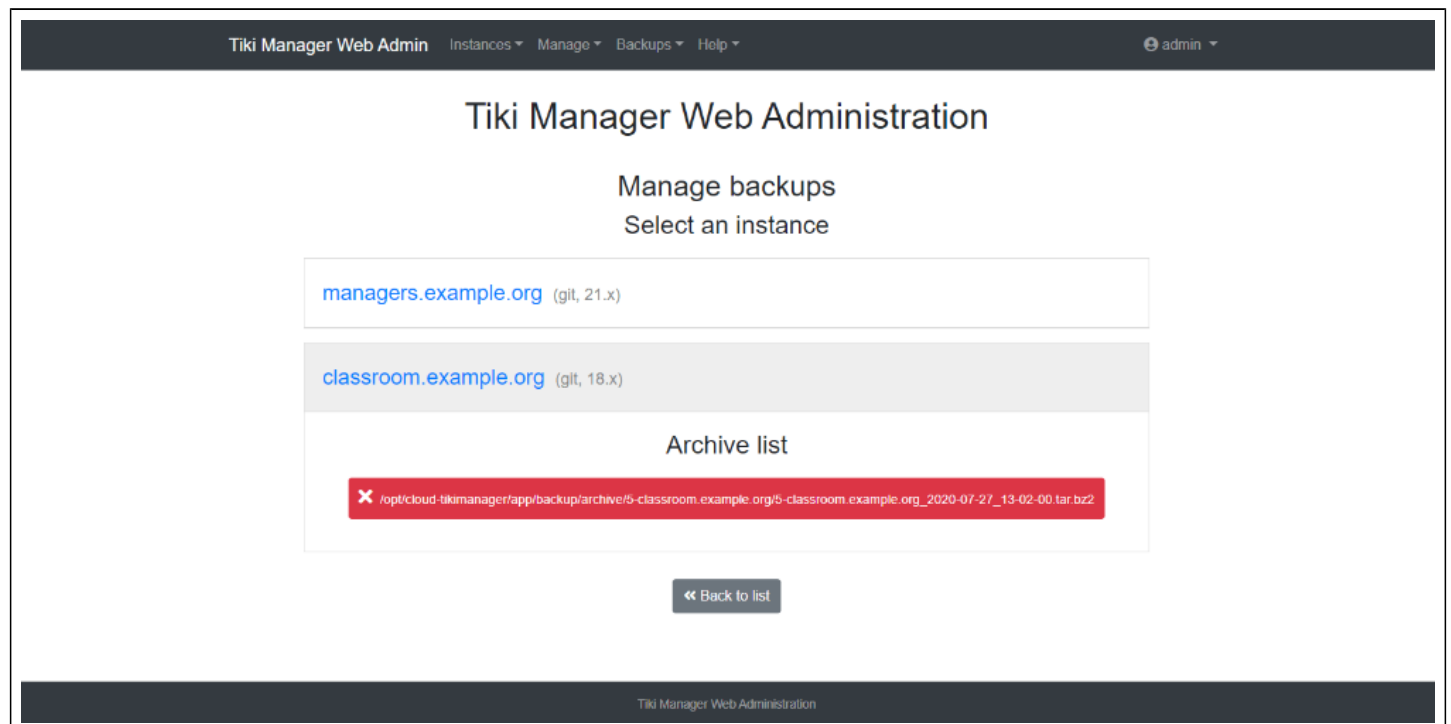
localhost (blank)

« Back to list Restore

Tiki Manager Web Administration

1.2.3.3. Manage backups

With Tiki Manager Web Administration, manage (list, delete) the backups of your instances, you can find them by going to **Backups → Manage Backups**, (e.g <http://example.org/manage>), click on an instance to access the list of backups.



Tiki Manager Web Admin Instances Manage Backups Help admin

Tiki Manager Web Administration

Manage backups

Select an instance

managers.example.org (git, 21.x)

classroom.example.org (git, 18.x)

Archive list

x /opt/cloud-tikimanager/app/backup/archive/5-classroom.example.org/5-classroom.example.org_2020-07-27_13-02-00.tar.bz2

« Back to list

Tiki Manager Web Administration

1.2.4. Help

1.2.4.1. Check requirements

Help → Check requirements, (e.g <http://example.org/check>), allows you to get a list of Tiki Manager

Web Administration requirements.

Tiki Manager Web Admin

Instances ▾ Manage ▾ Backups ▾ Help ▾

admin ▾

Tiki Manager Web Administration

Requirements

Name	Tags	Status
PHP SQLite extension	php-pdo	OK
SQLite package	sqlite3	OK
SSH tools	ssh, ssh-keygen	OK
SVN package	svn	OK
File synchronization package	rsync	OK
Process Prioritizer package	nice	OK
SCP package	scp	OK
MYSQL package	mysql, mysqldump	OK
File compression packages	gzip, bzip2, tar, unzip	OK

« Back to list

1.2.5. How to update access credentials (username/password)

To update the username and password, edit the config.php file that is located at the root of the web interface files.

Please note that reinstalling the web interface on the same exact folder, will not prompt for access credentials if the config.php file is found.

1.2.6. Too many invalid login attempts

If you get a message "Login is temporarily disabled, please contact an administrator to unlock the login process.", see [webmanager:block --reset](#)