

Statistics (Stats)

This admin panel includes the Statistics and Analytics admin settings available in Tiki.

To access: Click the **Statistics** icon  on the [Admin Panel](#) or Access **<http://example.org/tiki-admin.php?page=statistics>**

Key features

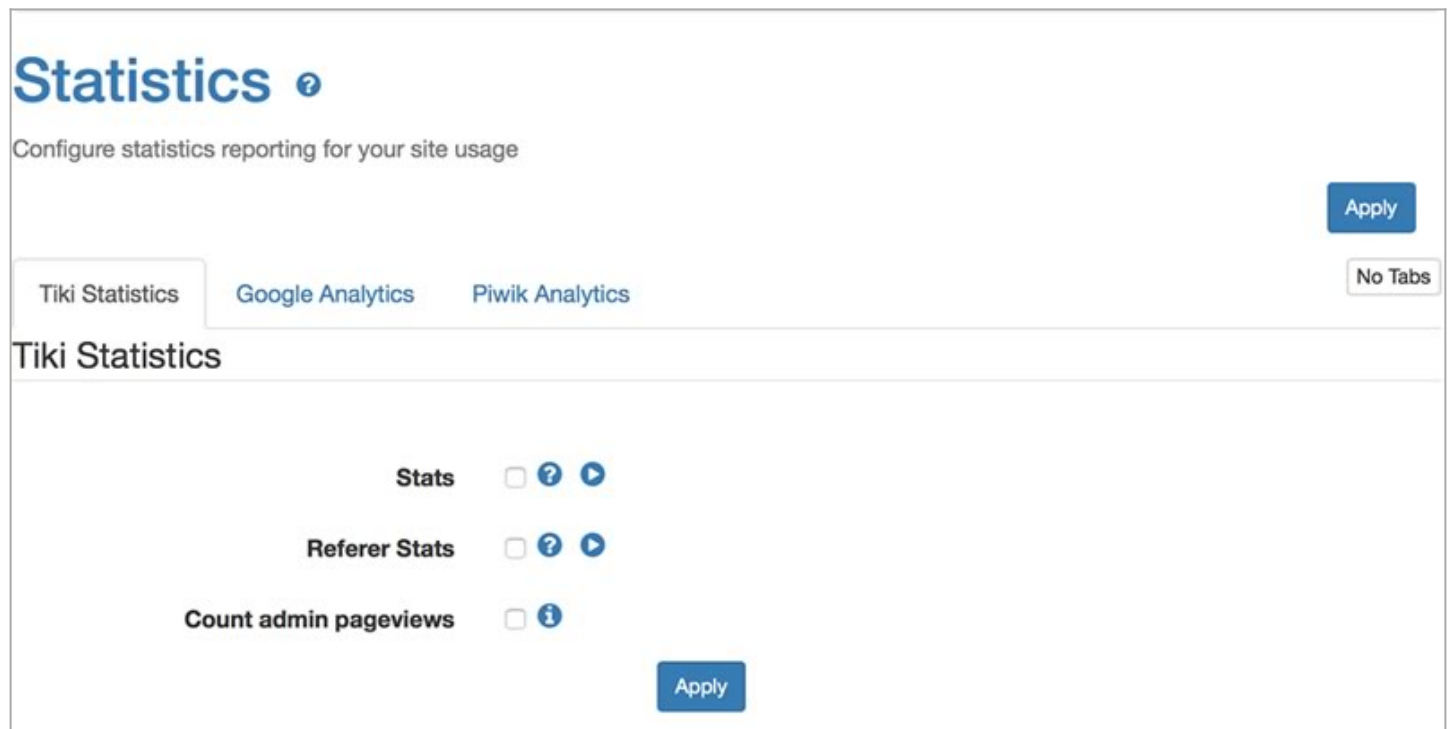
- Tiki Stats
 - Usage for Tiki and Tiki feature - Good and basic to track website usage.
- Google Analytics and Google Chart (require Google analytics account) - Analytics data.
- Piwik Analytics (require Piwik server) - Analytics data with custom options.

Tiki stats

Data are displayed accordingly to your feature usage. IE: If you don't use a feature you won't see anything for it.

It also include a "Referer Stats" option to track referer to your website.

Tiki stats admin panel



The screenshot shows the 'Statistics' admin panel. At the top, there's a header 'Statistics' with a help icon. Below it, a subtitle reads 'Configure statistics reporting for your site usage'. On the right, there's an 'Apply' button. Below the header, there are three tabs: 'Tiki Statistics' (selected), 'Google Analytics', and 'Piwik Analytics'. To the right of the tabs is a 'No Tabs' button. The main content area is titled 'Tiki Statistics'. It contains three settings, each with a checkbox, a help icon, and a play icon: 'Stats', 'Referer Stats', and 'Count admin pageviews'. At the bottom right of the settings area is an 'Apply' button.

Tiki stats user page

Stats	
Tiki Statistics	Piwik Analytics
Site Wiki File Galleries Articles User	
Site Stats	
Date of first pageview	Wednesday January 27, 2016
Days since first pageview	14
Total pageviews	69
Average pageviews per day (pvs)	4.93
Day with the most pageviews	Sunday January 31, 2016 (18 pvs)
Days with the fewest pageviews	Wednesday January 27, 2016 (2 pvs) Thursday February 4, 2016 (2 pvs) Saturday February 6, 2016 (2 pvs)
Wiki Stats	
Wiki Pages	2
Size of Wiki Pages	0.00134 Mb
Average page length	670.00 bytes
Versions	53
Average versions per page	26.50

Google Analytics

See: [Google Analytics](#)

Piwik Analytics

For information about Piwik, see: [Piwik Web analytics](#)

Piwik Analytics admin panel

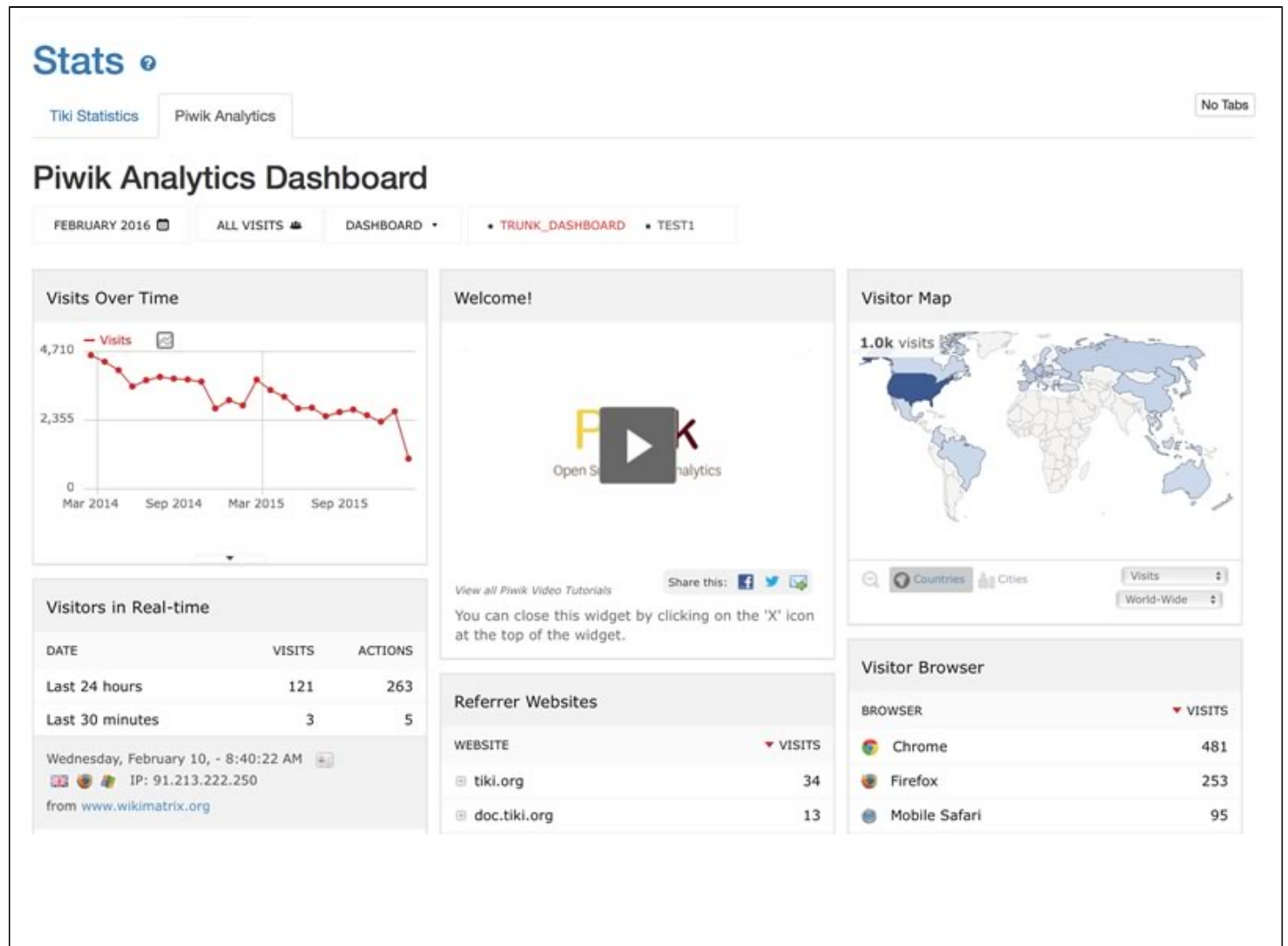
You need to set the URL to your Piwik server. IE : "http://mypiwik.com".

You need to set the Id of the website you want to display the statistics. IE : "1".

Statistics	
Configure statistics reporting for your site usage	
Tiki Statistics	Google Analytics
Piwik Analytics	
Piwik Analytics	
Piwik server url	<input type="text"/> ? ↺ http(s)://yourpiwik.tld/index.php(?token_auth=yourtokencode)
Site Id	<input type="text"/> ? ↺ ✓
<input type="button" value="Apply"/>	

Piwik Analytics user page

It is set to Piwik default dashboard but you can customise it accordingly to your need. (check Piwik widget page to review available modules)



Permission

Users with the tiki_p_view_stats permission can view several site statistics (stats) from the stats screen, the stats section can be accessed from the main application menu.

See also:

- [Search Stats](#)
- [Referer Stats](#)

Alias

- [Statistics](#)
- [Statistics-Admin](#)