

Smileys

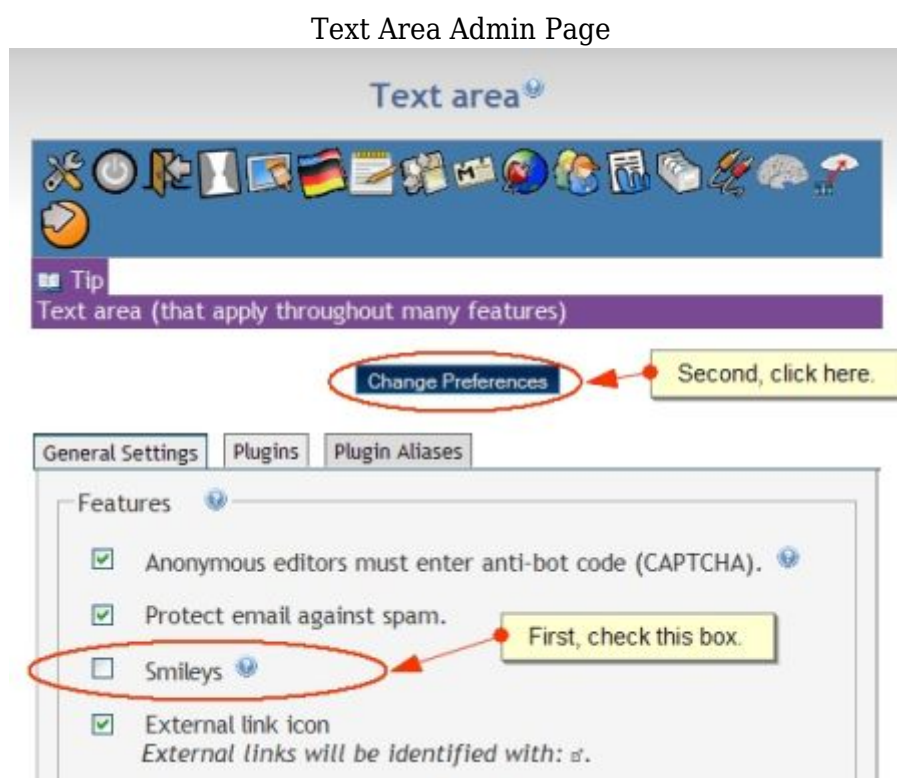
Smileys are a form of [Wiki Syntax](#).

It's easy to add smileys, small icons that denote emotions like (:biggrin, to any text area. Here are the smileys that are available:

(:biggrin[:confused[:cool[:cry[:eek[:evil[:exclaim[:frown[:idea[:lol[:mad[:mrgreen[:neutral[:question[:razz[:redface[:rolleyes[:sad[:smile[:surprised[:twisted[:wink[:arrow[:santa

Here's how to add smileys to your text:

- First, you'll need to configure TikiWiki to allow smileys. Do this by going to **Admin Home > Text area > General Settings** and checking the checkbox for Smileys. (Or use the path **your root/tiki-admin.php?page=textarea**).
- Once you've checked the box, click on *Change Preferences* at the top or the bottom of the page. Here's a screenshot:



- Once enabled, you will see an option to add smileys whenever you are in edit mode for a wiki page, article, forum post, blog post, etc. Place your cursor where you want the smiley and click the smiley icon you want to insert. Here's what the Smiley edit option looks like:



- Smileys can also be added by typing a (:smileytag:) wherever you want the smiley to appear. Below are the tags for each smiley:

Smiley	Tag
☺	:~)
(:biggrin☺	(:biggrin:)
(:confused☹	(:confused:)
(:cool☺	(:cool:)
(:cry☹	(:cry:)
(:eek☹	(:eek:)
(:evil☹	(:evil:)
(:exclaim☹	(:exclaim:)
(:frown☹	(:frown:)
(:idea☺	(:idea:)
(:lol☹	(:lol:)
(:mad☹	(:mad:)
(:mrgreen☹	(:mrgreen:)

Smiley	Tag
(:neutral☺	(:neutral:)
(:question☹	(:question:)
(:razz☺	(:razz:)
(:redface☹	(:redface:)
(:rolleyes☹	(:rolleyes:)
(:sad☹	(:sad:)
(:smile☺	(:smile:)
(:surprised☹	(:surprised:)
(:twisted☹	(:twisted:)
(:wink☹	(:wink:)
(:arrow☹	(:arrow:)
(:santa☹	(:santa:)

Alias

- [Smiley](#)
- [Emoticons](#)
- [Emoticon](#)